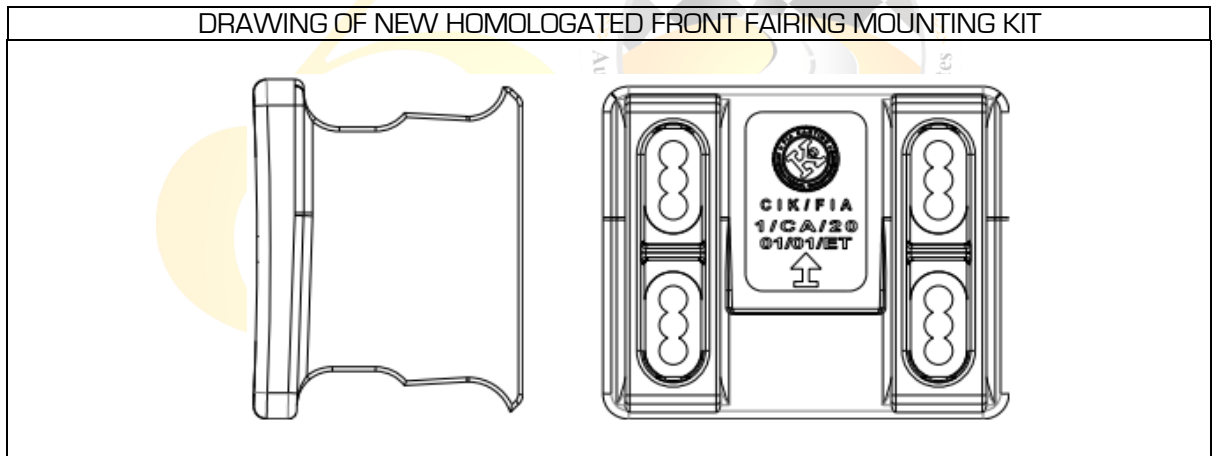


**REF 16100501**

**COMPETITOR BULLETIN - CIK FRONT FAIRING MOUNTING KIT**

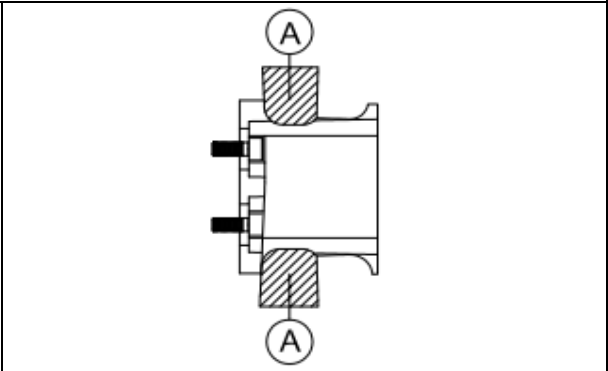
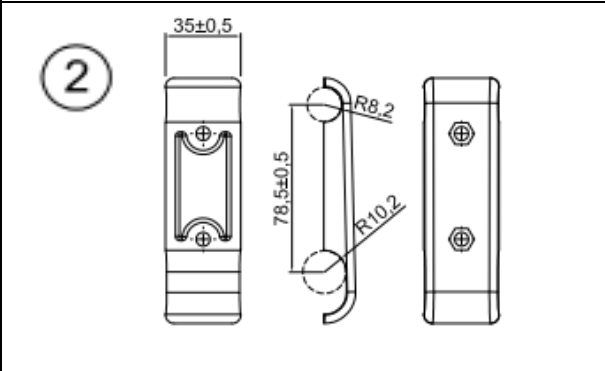
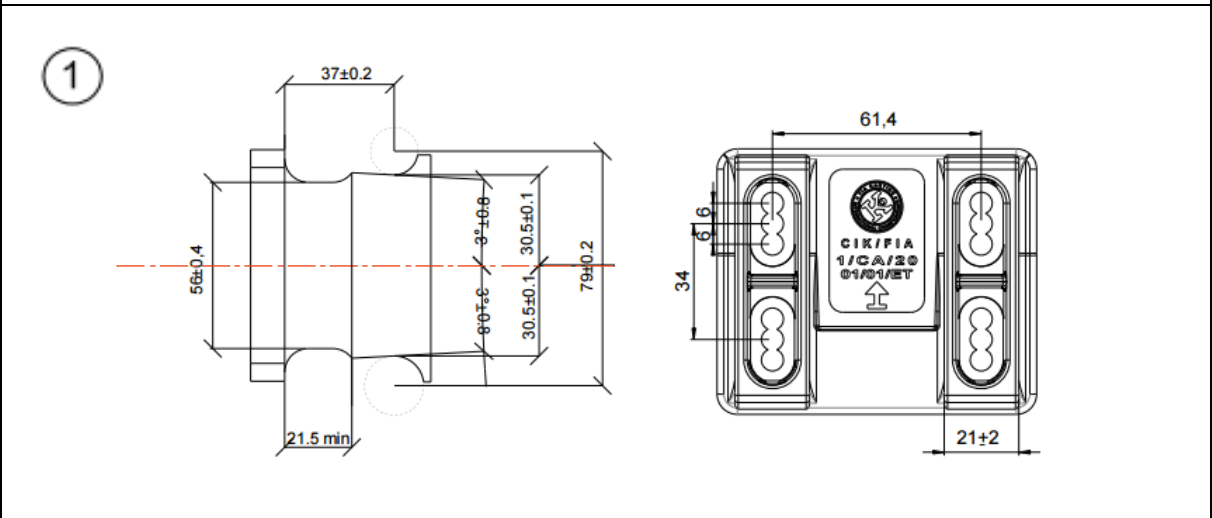
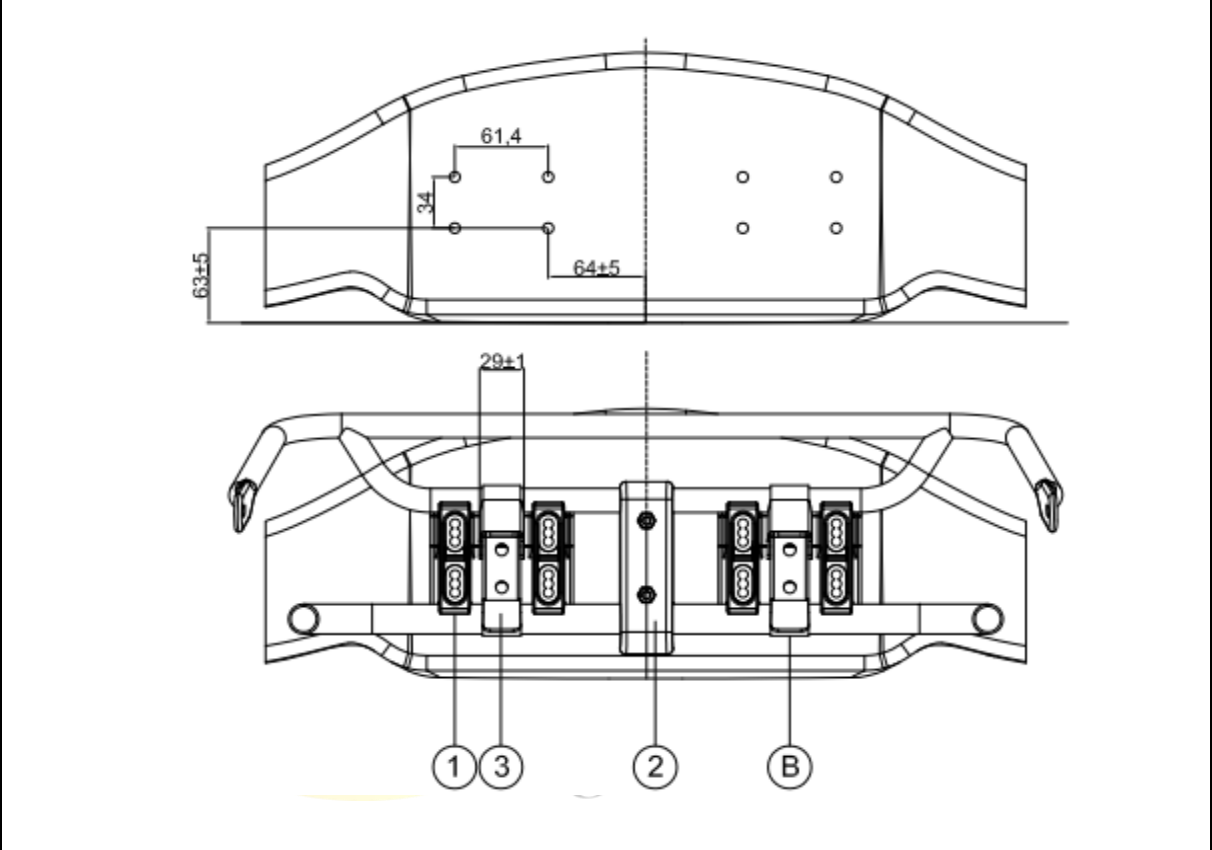
Dear Competitor/Entrant,

This formal bulletin is to alert you to the introduction of the CIK-homologated detachable front fairing mounting kit which must be used at all rounds of the UAE Rotax MAX Challenge 2016-17 unless otherwise specified in the Supplementary Regulations.





TECHNICAL DRAWING OF NEW HOMOLOGATED FRONT FAIRING MOUNTING KIT



With reference to the technical drawing, the **front fairing mounting kit** is made up of the following components:

- 1 Mounting bracket kit for front fairing (2 plastic pieces + 8 screws in total)
- 2 Front bumper support (2 plastic half shells + 2 screws in total)
- 3 Adjustable hook clamps (2 pieces, both metal)

- A No parts (e.g. screws) are admitted in this area
- B Hook clamps **MUST** be opened and closed by hand only without any tools

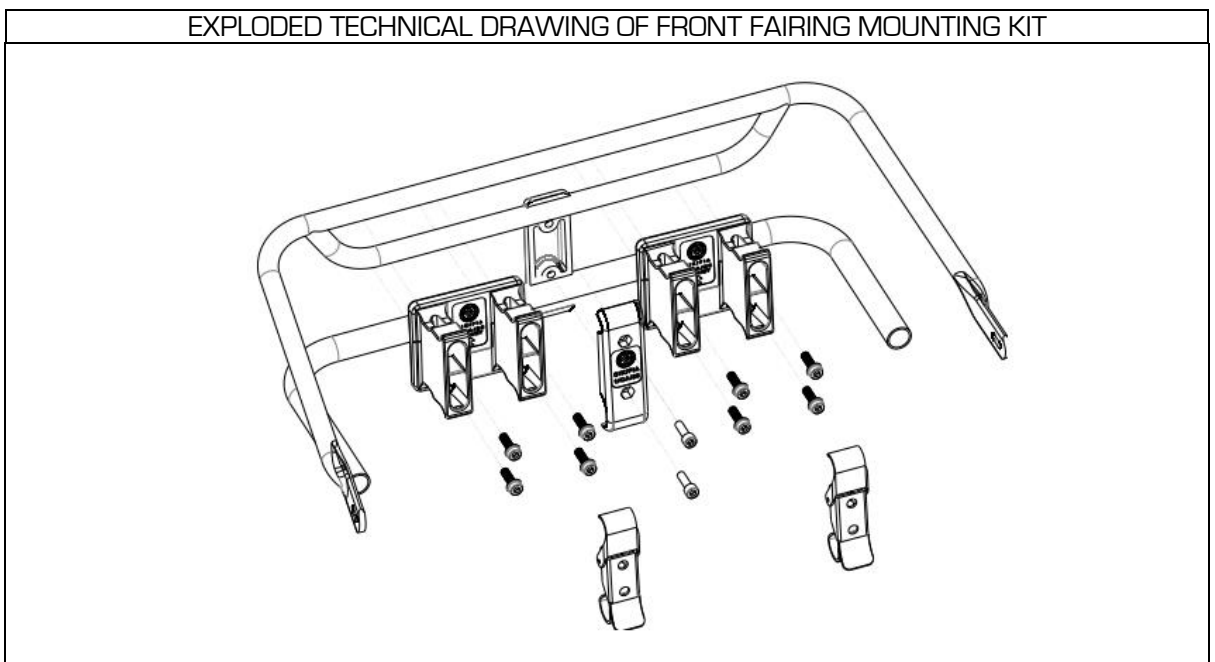
The CIK logo and Homologation number shall be embossed on each plastic piece, as below:



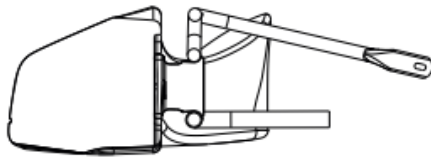
It is only permitted to fix the front fairing onto the kart using the front fairing mounting kit. No other device is authorised. It must be possible for the front fairing to move freely back in the direction of the chassis without any obstruction from any part that may restrict movement.

The front bumpers (upper and lower tube) must be rigidly connected with the chassis and must have a smooth surface. Any mechanical work or other intervention to maximise the friction of the front bumpers is strictly forbidden.

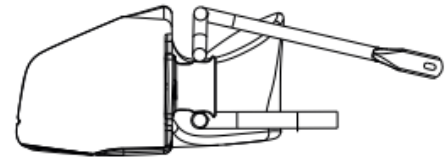
EXPLODED TECHNICAL DRAWING OF FRONT FAIRING MOUNTING KIT



## CORRECT INSTALLATION OF FRONT FAIRING MOUNTING KIT

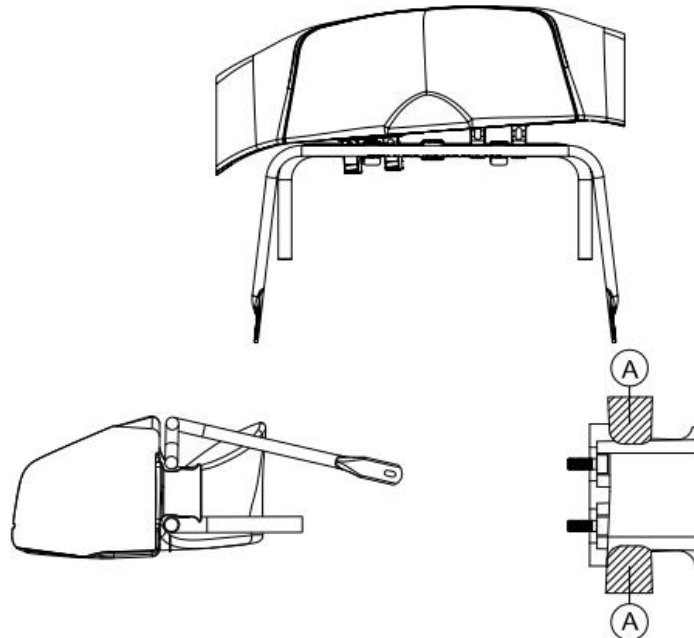


CORRECT POSITION



ACCEPTABLE POSITION

## INCORRECT POSITION OF FRONT FAIRING MOUNTING KIT



FRONT FAIRING IS NOT IN AN ACCEPTABLE POSITION IF ANY PART OF THE TUBES OF THE FRONT BUMPER ARE IN THE AREA MARKED 'A'

The front fairing must be in the correct (or acceptable) position at all times during each competitive session.

In the event a Judge of Fact reports the incorrect position of the front fairing, an automatic and indisputable 10 second penalty (or deletion of the fastest lap in Qualifying) will be applied to the driver(s) concerned.

Such penalties are purely for non-compliance of the acceptable front fairing position and do not preclude the driver from receiving further sanctions pertaining to the root cause.

It is not permitted to touch the front fairing at any point before reaching Parc Ferme. Should a driver or mechanic be found to [be attempting to] replace the front fairing in an attempt to avoid a penalty, he/she will be immediately excluded from that race and will be referred to the Stewards.

The regulation will apply to all MAX classes for which the front fairing mounting kit is compatible.

Yours sincerely,

Guy Sheffield  
Al Ain Raceway

